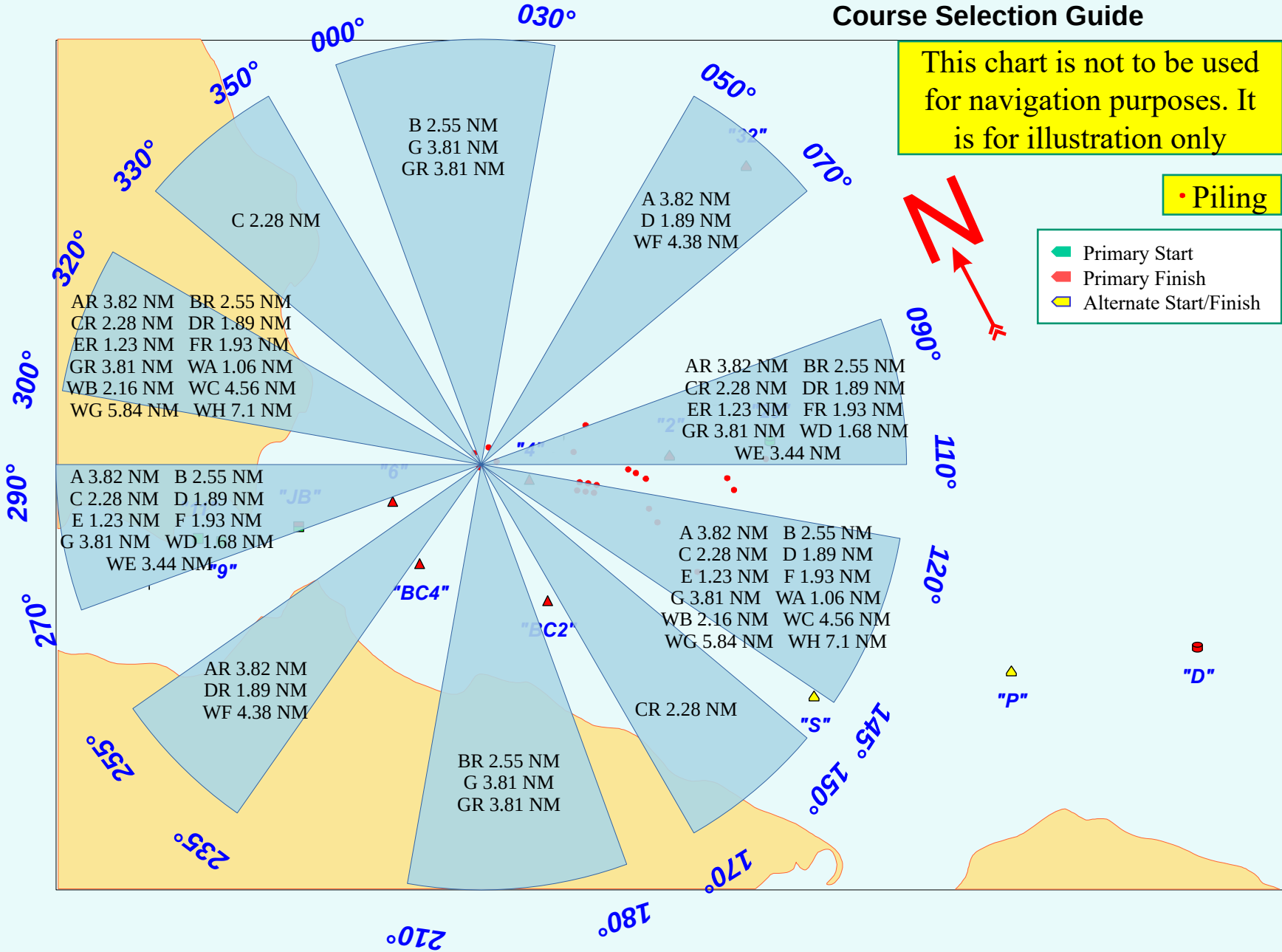


Course Selection Guide

This chart is not to be used for navigation purposes. It is for illustration only

• Piling

- Primary Start
- Primary Finish
- Alternate Start/Finish



This chart is not to be used
for navigation purposes. It
is for illustration only

"32"

DYC Standard PHRF Courses

Course Name	Preferred Start/Finish Pins	Alternate Start/Finish Pins	Course Marks (***) is the lap repeat
A	JB	11, 6, BC4	(BC2, 29, JB)
B	JB	11, 6, BC4	(BC2, 4, JB)
C	JB	11, BC4	(BC2, 6, JB)
D	JB	11, 6	(BC4, 4, JB)
E	JB	11	(BC4, 6, JB)
F	JB	11	BC4, (6, BC4), 6, JB
G	JB	11, 6, BC4	BC2, (4, BC2), 4, JB
WA	JB	11	(BC4, JB)
WB	JB	11, BC4	(BC2, JB)
WC	JB	11, BC4	(S, JB)
WD	JB	11, 6	(4, JB)
WE	JB	11, 6	(29, JB)
WF	JB	11	(32, JB)
WG	JB	11, 6, BC4	(P, JB)
WH	JB	11	(D, JB)
Dahlgren Cup	JB	P	(BC2, S, D, 29, 32, JB)
Z			See Race Officer

• Piling

- Primary Start
- Primary Finish
- Alternate Start/Finish

•
"D"

This chart is not to be used for navigation purposes. It is for illustration only

• Piling

Position of Various ATONs Near Machodoc Creek

Data from US Coast Guard Light List Volume II, 2024-05-01

Mark	Latitude North	Longitude West	Light List Latitude	Light List Longitude	Light List Number
9	38 18.891	-77 01.985	38-18-53.459N	077-01-59.115W	17670
11	38 18.944	-77 02.081	38-18-56.650N	077-02-04.887W	17675
JB	38 18.841	-77 01.632	38-18-50.469N	077-01-37.918W	17695
6	38 18.815	-77 01.192	38-18-48.901N	077-01-11.511W	17660
4	38 18.705	-77 00.572	38-18-42.272N	077-00-34.333W	17655
29	38 18.508	-76 59.482	38-18-30.489N	076-59-28.919W	17635
32	38 19.908	-76 59.199	38-19-54.487N	076-59-11.919W	17705
2	38 18.599	-76 59.934	38-18-35.926N	076-59-56.067W	17640
BC4	38 18.464	-77 01.163	38-18-27.833N	077-01-09.765W	17685
BC2	38 18.075	-77 00.663	38-18-04.479N	077-00-39.778W	17680
S	38 17.175	-76 59.649	38-17-10.492N	076-59-38.919W	17570
P	38 16.982	-76 58.764	38-16-58.892N	076-58-45.817W	17610
D	38 16.800	-76 57.929	38-16-47.992N	076-57-55.716W	17615

y Start
y Finish
ite Start/Finish

"D"

This chart is not to be used for navigation purposes. It is for illustration only

"32"

• Piling

GPS Distances Between ATON's Near Machodoc Creek (NM)

	9	11	JB	6	4	29	32	2	BC4	BC2	S	P	D
9		0.09	0.28	0.63	1.12	2.00	2.41	1.64	0.77	1.32	2.51	3.17	3.81
11	0.09		0.37	0.71	1.21	2.09	2.46	1.72	0.87	1.41	2.60	3.26	3.90
JB	0.28	0.37		0.35	0.84	1.72	2.19	1.35	0.53	1.08	2.28	2.92	3.55
6	0.63	0.71	0.35		0.50	1.38	1.91	1.01	0.35	0.85	2.04	2.64	3.26
4	1.12	1.21	0.84	0.50		0.88	1.62	0.51	0.52	0.63	1.69	2.23	2.82
29	2.00	2.09	1.72	1.38	0.88		1.42	0.37	1.32	1.02	1.34	1.63	2.10
32	2.41	2.46	2.19	1.91	1.62	1.42		1.43	2.11	2.16	2.76	2.95	3.26
2	1.64	1.72	1.35	1.01	0.51	0.37	1.43		0.97	0.78	1.44	1.86	2.39
BC4	0.77	0.87	0.53	0.35	0.52	1.32	2.11	0.97		0.55	1.75	2.40	3.04
BC2	1.32	1.41	1.08	0.85	0.63	1.02	2.16	0.78	0.55		1.20	1.85	2.50
S	2.51	2.60	2.28	2.04	1.69	1.34	2.76	1.44	1.75	1.20		0.72	1.40
P	3.17	3.26	2.92	2.64	2.23	1.63	2.95	1.86	2.40	1.85	0.72		0.68
D	3.81	3.90	3.55	3.26	2.82	2.10	3.26	2.39	3.04	2.50	1.40	0.68	

inish

"S"

This chart is not to be used
for navigation purposes. It
is for illustration only

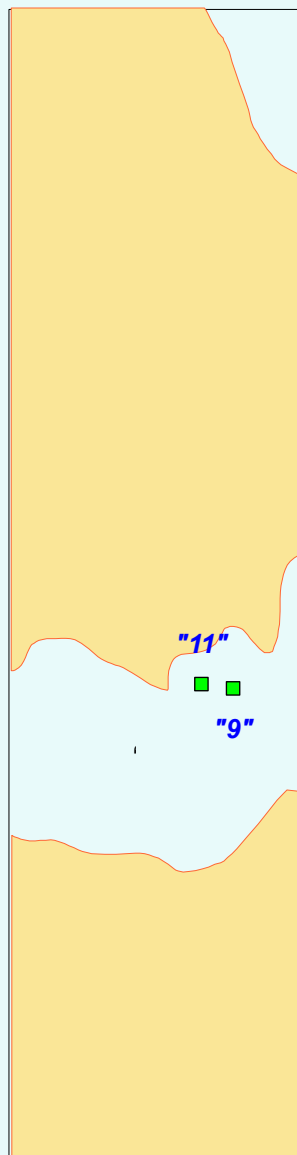
"32"

**GPS Bearing Between ATON's Near Machodoc Creek
Magnetic Declination Estimated By World Magnetic Model
(WMM) As of
05/06/2024 : 11° 26' 10"W ±0° 22' 3"**

	9	11	JB	6	4	29	32	2	BC4	BC2	S	P	D
9		305	100	097	100	101	065	100	123	128	133	127	123
11	125		106	100	101	102	067	102	124	128	133	127	123
JB	280	286		094	099	101	061	100	136	135	137	130	125
6	277	280	274		103	103	055	102	176	151	144	134	128
4	280	281	279	283		103	042	102	243	186	155	141	133
29	281	282	281	283	283		009	284	268	245	186	160	144
32	245	247	241	235	222	189		204	227	212	187	173	162
2	280	282	280	282	282	104	024		262	227	171	150	139
BC4	304	304	316	356	063	088	047	082		135	137	128	123
BC2	308	308	315	331	006	065	032	047	315		138	126	121
S	313	313	317	324	335	006	007	351	317	319		106	106
P	307	307	310	314	321	340	353	330	308	306	286		105
D	303	303	305	308	313	324	342	319	303	301	286	285	

ling

inish



Courses and Distances								
Course Name	Length		Mark/Leg Distance					
A	3.82	JB	BC2 1.08	29 1.02	JB 1.72			
B	2.55	JB	BC2 1.08	4 0.63	JB 0.84			
C	2.28	JB	BC2 1.08	6 0.85	JB 0.35			
D	1.89	JB	BC4 0.53	4 0.52	JB 0.84			
E	1.23	JB	BC4 0.53	6 0.35	JB 0.35			
F	1.93	JB	BC4 0.53	6 0.35	BC4 0.35	6 0.35	JB 0.35	
G	3.81	JB	BC2 1.08	4 0.63	BC2 0.63	4 0.63	JB 0.84	
WA	1.06	JB	BC4 0.53	JB 0.53				
WB	2.16	JB	BC2 1.08	JB 1.08				
WC	4.56	JB	S 2.28	JB 2.28				
WD	1.68	JB	4 0.84	JB 0.84				
WE	3.44	JB	29 1.72	JB 1.72				
WF	4.38	JB	32 2.19	JB 2.19				
WG	5.84	JB	P 2.92	JB 2.92				
WH	7.10	JB	D 3.55	JB 3.55				
Dahlgren Cup	9.39	JB	BC2 1.08	S 1.20	D 1.40	29 2.10	32 1.42	JB 2.19

not to be used
on purposes. It
tration only

• Piling

Primary Start
Primary Finish
Alternate Start/Finish

•
"D"

This chart is not to be used
for navigation purposes. It
is for illustration only

"32"

Course Distance by Lap Count

	Normal Start/Finish						Light 11 Start/Finish				
	1	2	3	4	5		1	2	3	4	5
A	3.82	7.64	11.46	15.29	19.11	A	4.55	8.38	12.20	16.02	19.84
B	2.55	5.11	7.66	10.22	12.77	B	3.28	5.84	8.40	10.95	13.51
C	2.28	4.55	6.83	9.10	11.38	C	3.01	5.29	7.56	9.84	12.11
D	1.89	3.78	5.67	7.57	9.46	D	2.62	4.52	6.41	8.30	10.19
E	1.23	2.46	3.68	4.91	6.13	E	1.96	3.19	4.42	5.64	6.87
F	1.93	2.63	3.34	4.04	4.74	F	2.66	3.37	4.07	4.78	5.48
G	3.81	5.08	6.35	7.61	8.88	G	4.54	5.81	7.08	8.35	9.62
WA	1.06	2.11	3.17	4.22	5.28	WA	1.79	2.85	3.90	4.96	6.01
WB	2.16	4.32	6.48	8.64	10.80	WB	2.89	5.05	7.21	9.37	11.53
WC	4.56	9.12	13.68	18.24	22.80	WC	5.29	9.86	14.42	18.98	23.54
WD	1.68	3.37	5.05	6.74	8.42	WD	2.41	4.10	5.79	7.47	9.16
WE	3.44	6.88	10.32	13.76	17.20	WE	4.17	7.61	11.05	14.49	17.93
WF	4.38	8.75	13.13	17.50	21.88	WF	5.11	9.49	13.86	18.24	22.61
WG	5.84	11.68	17.52	23.36	29.20	WG	6.57	12.41	18.25	24.09	29.93
WH	7.10	14.20	21.31	28.41	35.51	WH	7.83	14.94	22.04	29.14	36.25
Dahlgren Cup	9.39	18.77	28.16	37.54	46.93	Dahlgren Cup	10.12	19.51	28.89	38.28	47.66

ng

nish

Course 'A'
Dist = 3.82 NM

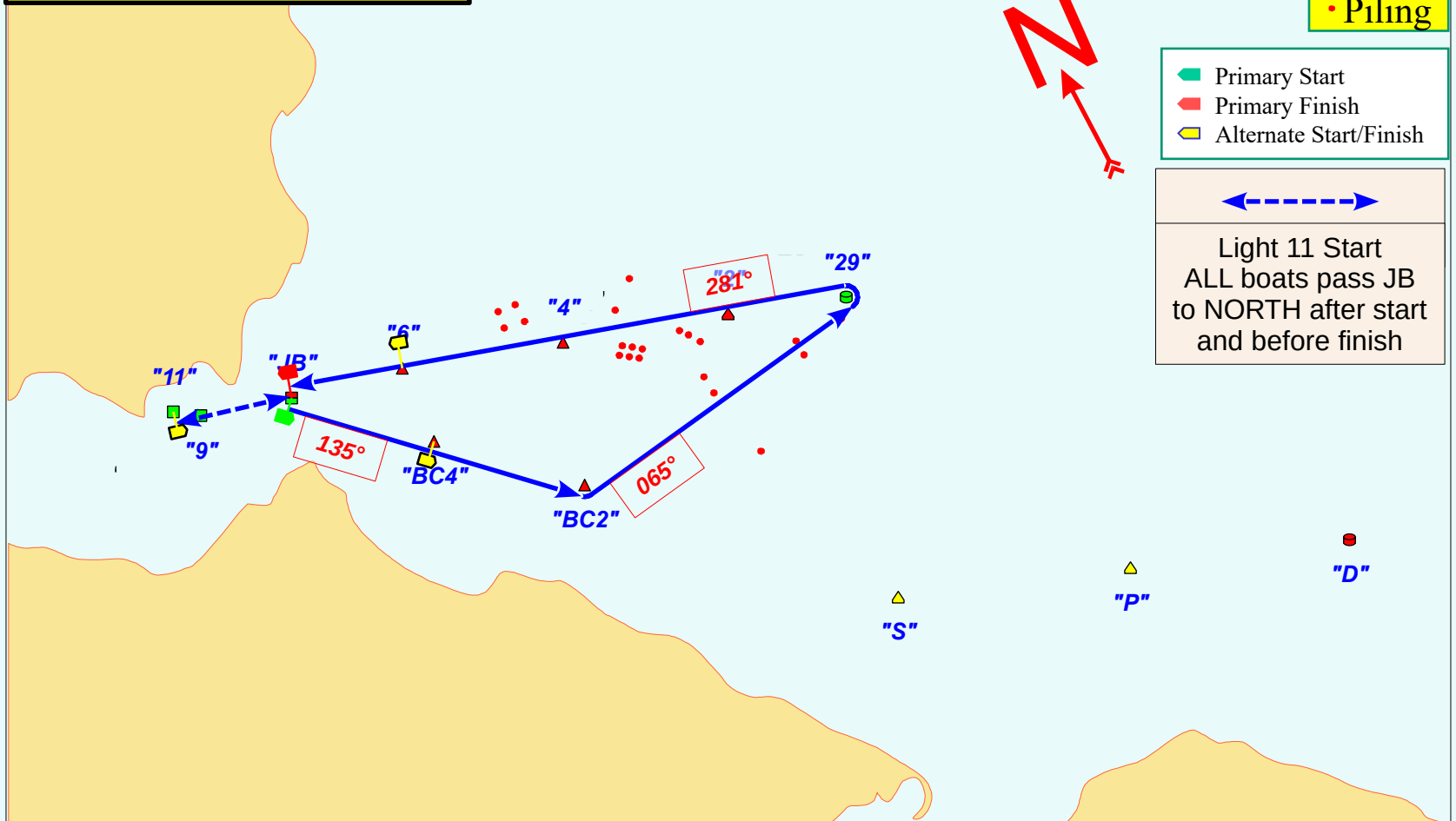
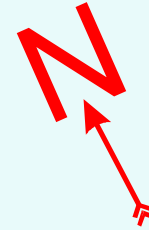
This chart is not to be used
for navigation purposes. It
is for illustration only

• Piling

- Primary Start
- Primary Finish
- Alternate Start/Finish



Light 11 Start
ALL boats pass JB
to NORTH after start
and before finish



Course 'AR'
Dist = 3.82 NM

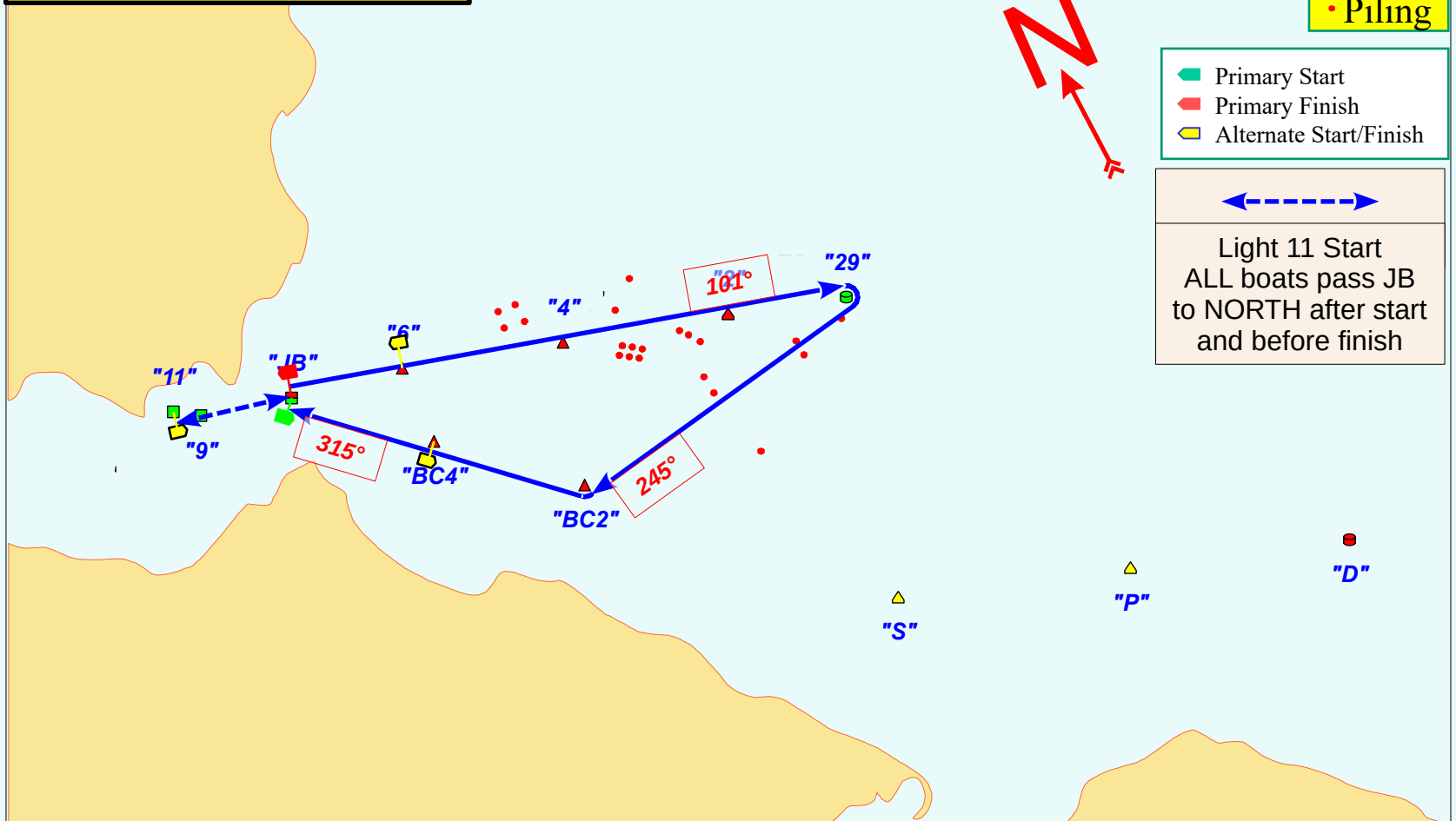
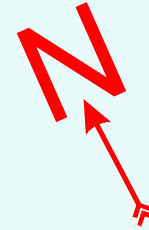
This chart is not to be used
for navigation purposes. It
is for illustration only

• Piling

- Primary Start
- Primary Finish
- Alternate Start/Finish



Light 11 Start
ALL boats pass JB
to NORTH after start
and before finish



Course 'B'
Dist = 2.55 NM

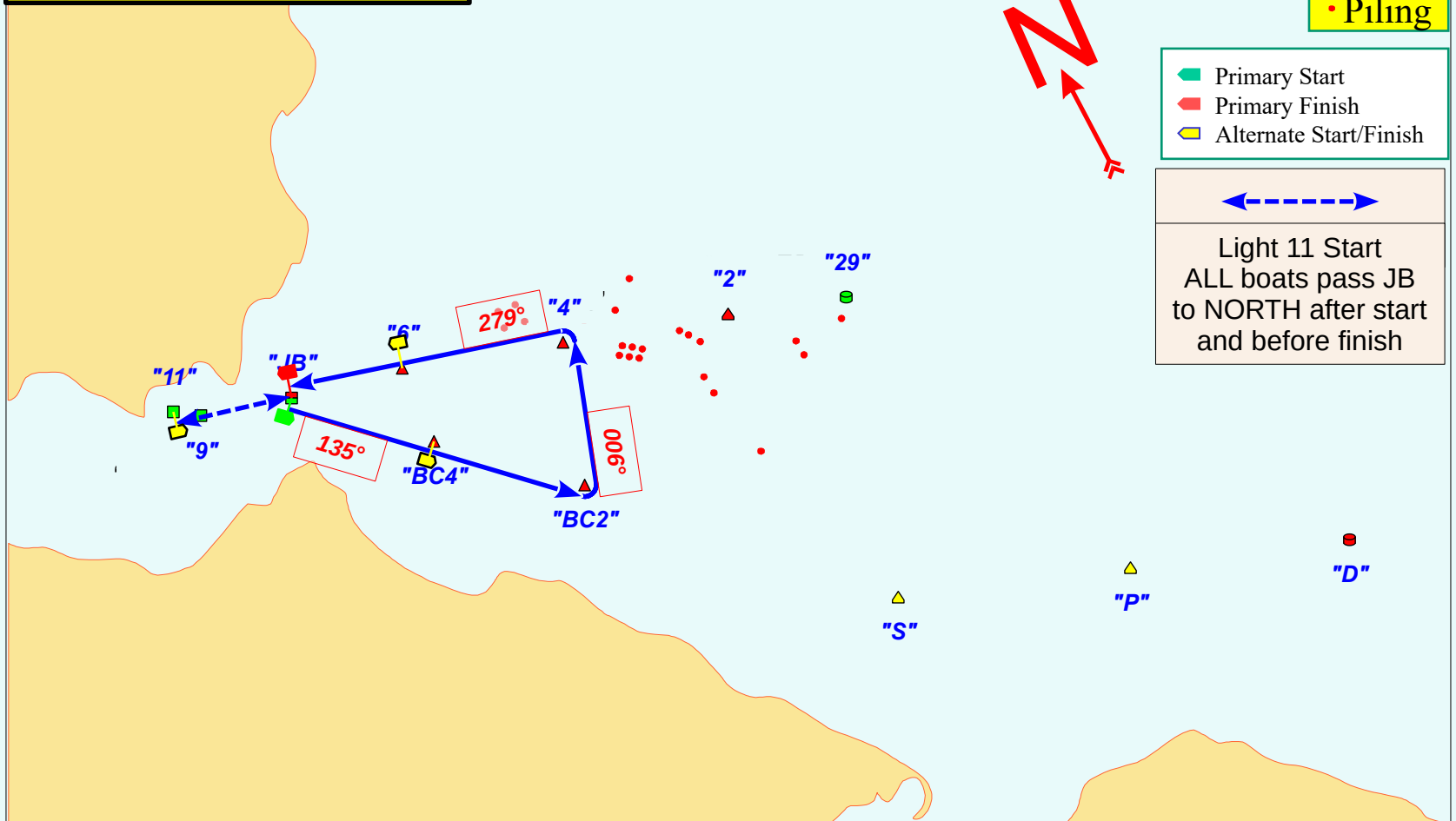
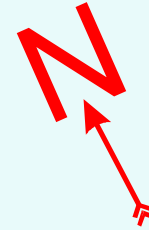
This chart is not to be used
for navigation purposes. It
is for illustration only

• Piling

- Primary Start
- Primary Finish
- Alternate Start/Finish



Light 11 Start
ALL boats pass JB
to NORTH after start
and before finish



Course 'BR'
Dist = 2.55 NM

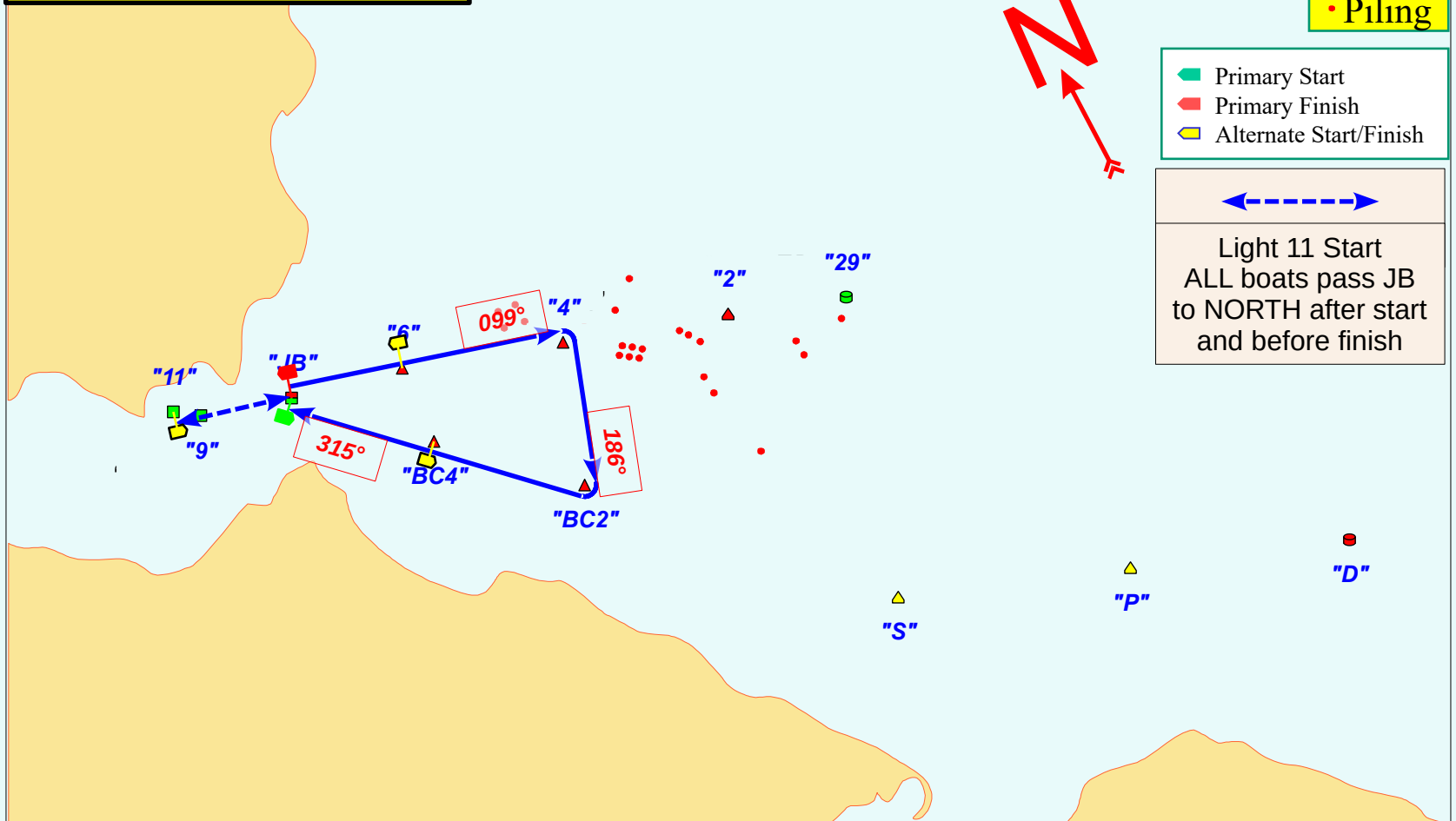
This chart is not to be used
for navigation purposes. It
is for illustration only

• Piling

- Primary Start
- Primary Finish
- Alternate Start/Finish



Light 11 Start
ALL boats pass JB
to NORTH after start
and before finish



Course 'C'
Dist = 2.28 NM

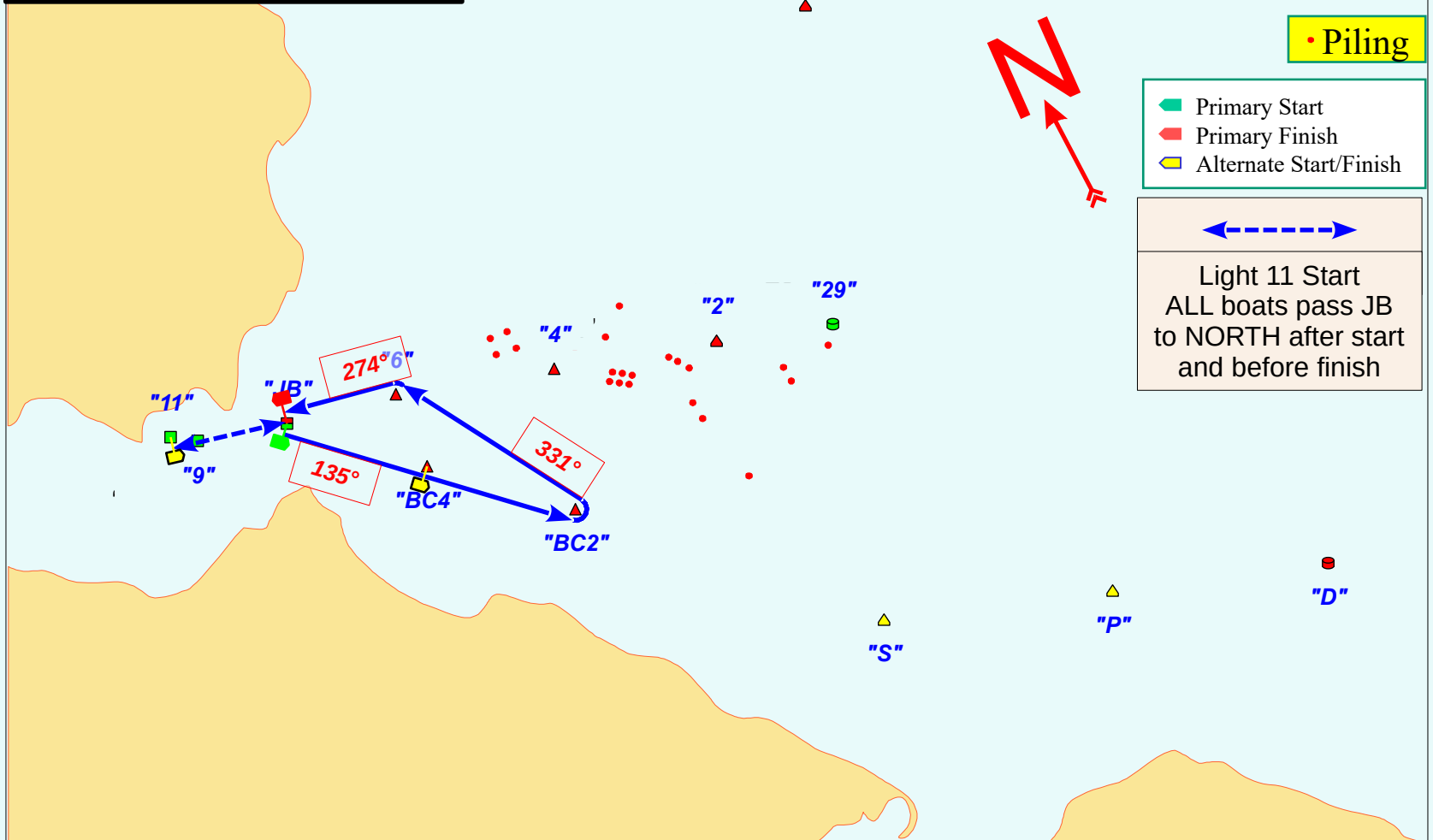
This chart is not to be used
for navigation purposes. It
is for illustration only

• Piling

- Primary Start
- Primary Finish
- Alternate Start/Finish



Light 11 Start
ALL boats pass JB
to NORTH after start
and before finish



Course 'CR'
Dist = 2.28 NM

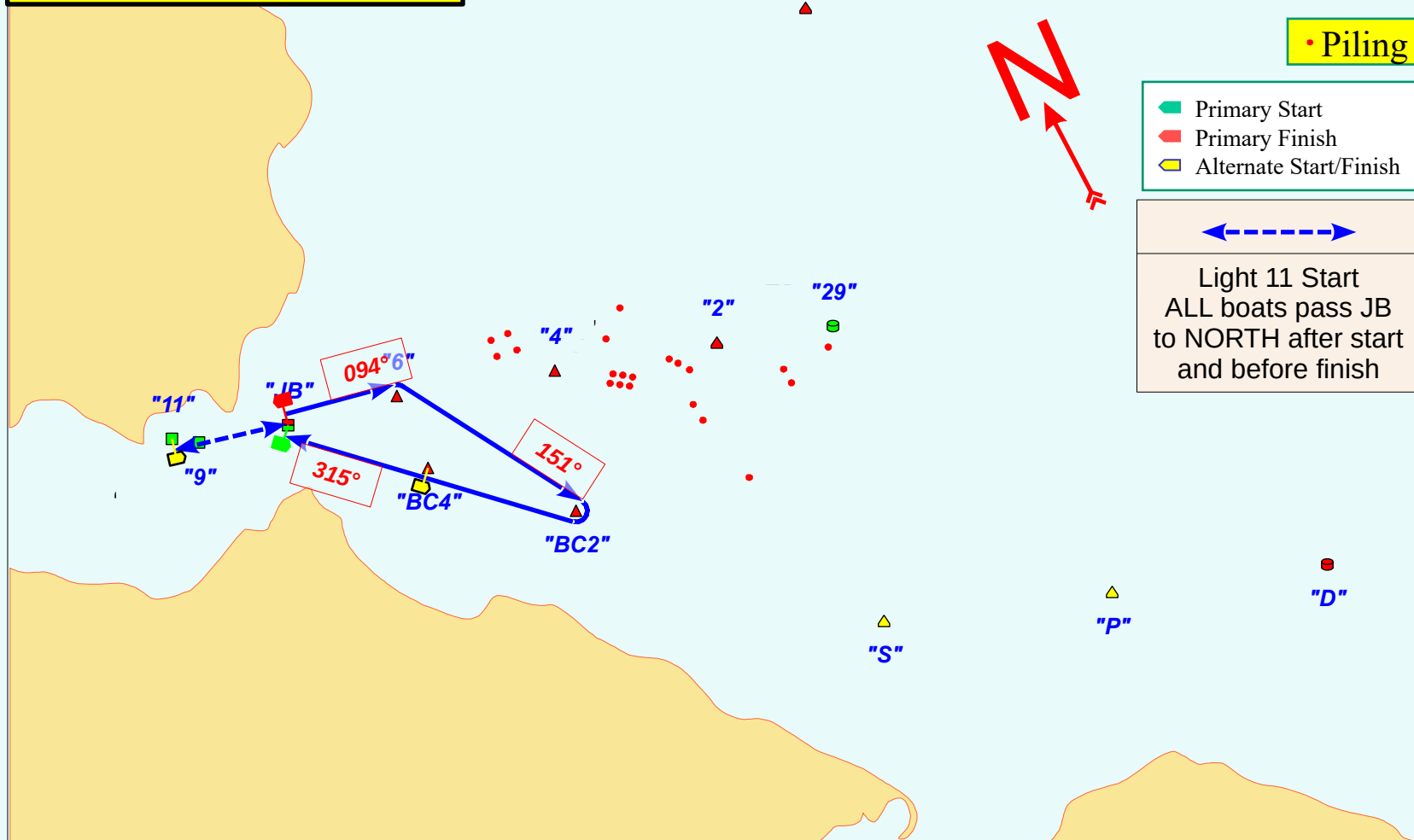
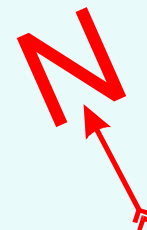
This chart is not to be used
for navigation purposes. It
is for illustration only

• Piling

- Primary Start
- Primary Finish
- Alternate Start/Finish



Light 11 Start
ALL boats pass JB
to NORTH after start
and before finish



Course 'D'

Dist = 1.89 NM

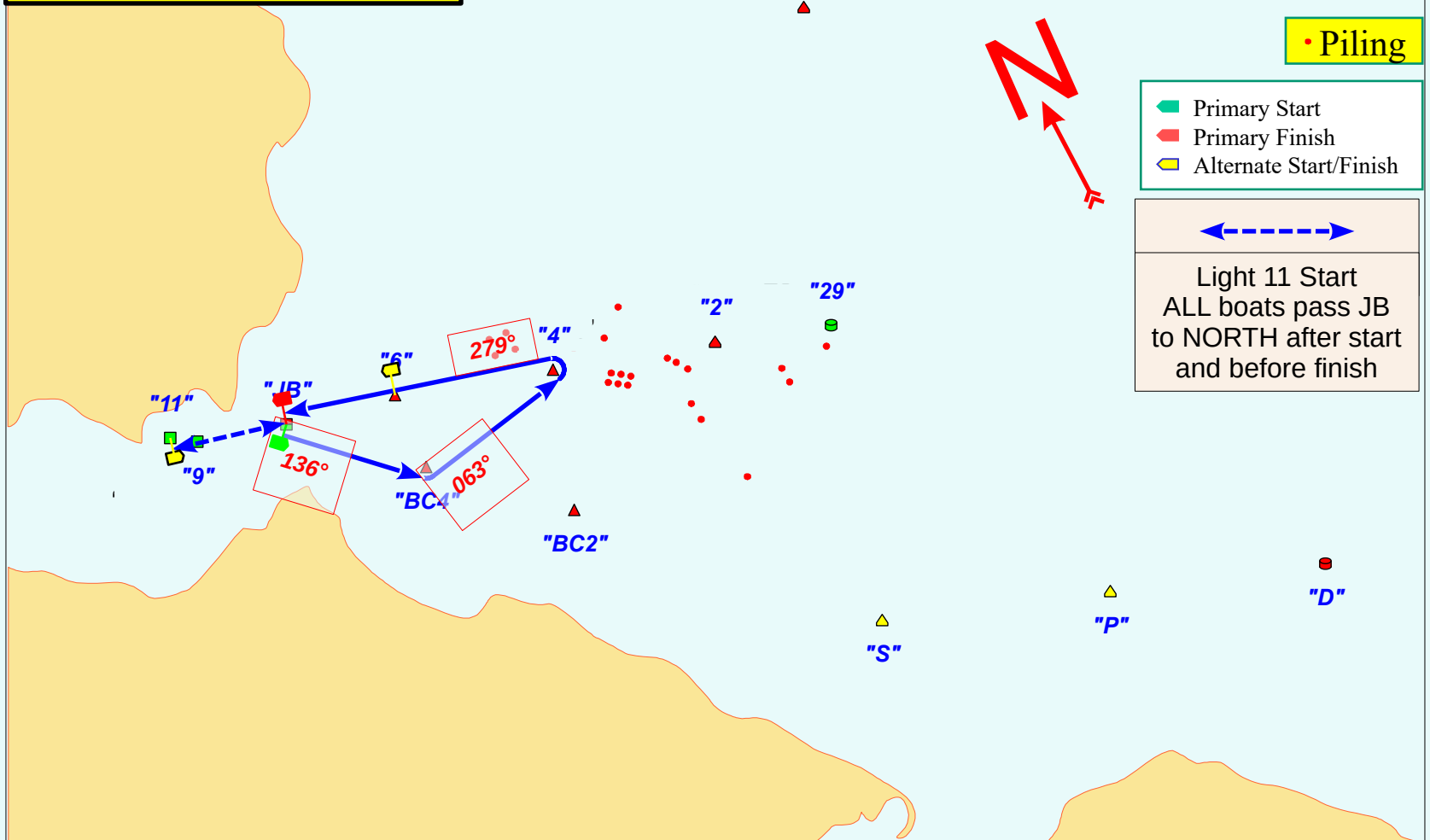
This chart is not to be used
for navigation purposes. It
is for illustration only

• Piling

- Primary Start
- Primary Finish
- Alternate Start/Finish



Light 11 Start
ALL boats pass JB
to NORTH after start
and before finish



Course 'DR'
Dist = 1.89 NM

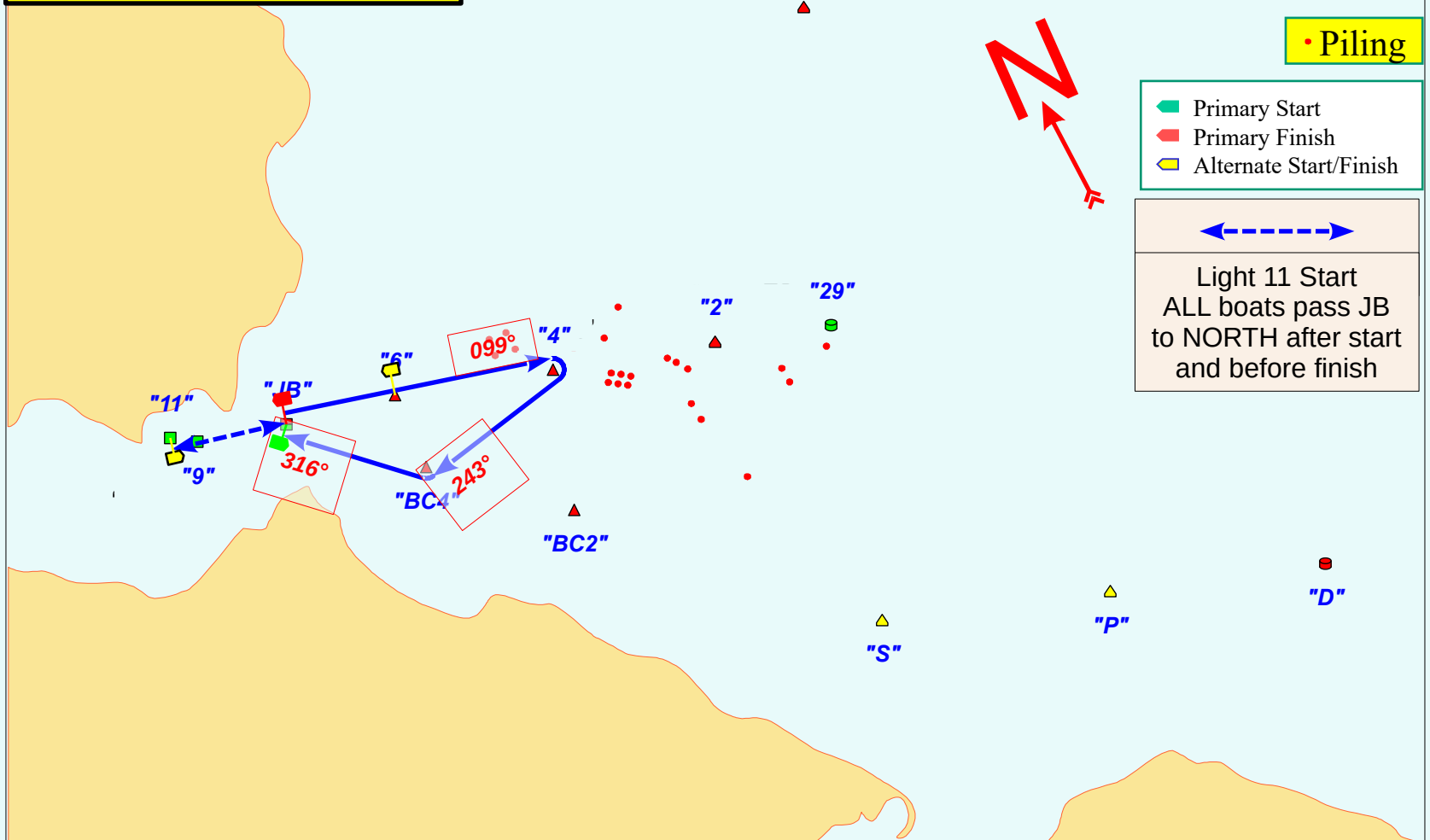
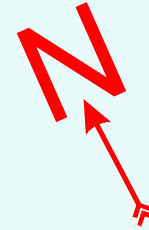
This chart is not to be used
for navigation purposes. It
is for illustration only

• Piling

- Primary Start
- Primary Finish
- Alternate Start/Finish



Light 11 Start
ALL boats pass JB
to NORTH after start
and before finish



Course 'E'
Dist = 1.23 NM

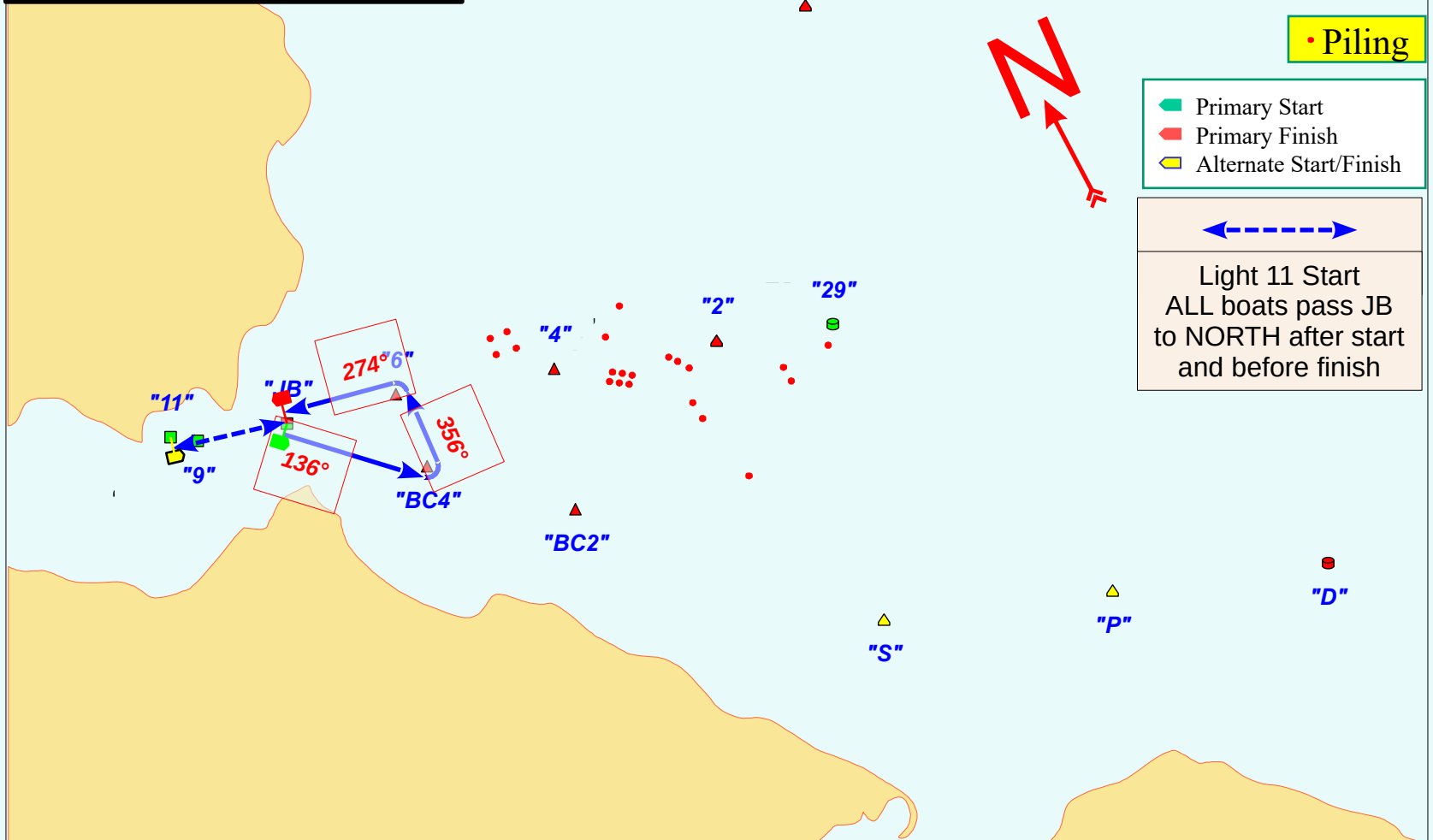
This chart is not to be used
for navigation purposes. It
is for illustration only

• Piling

- Primary Start
- Primary Finish
- Alternate Start/Finish



Light 11 Start
ALL boats pass JB
to NORTH after start
and before finish



Course 'ER'
Dist = 1.23 NM

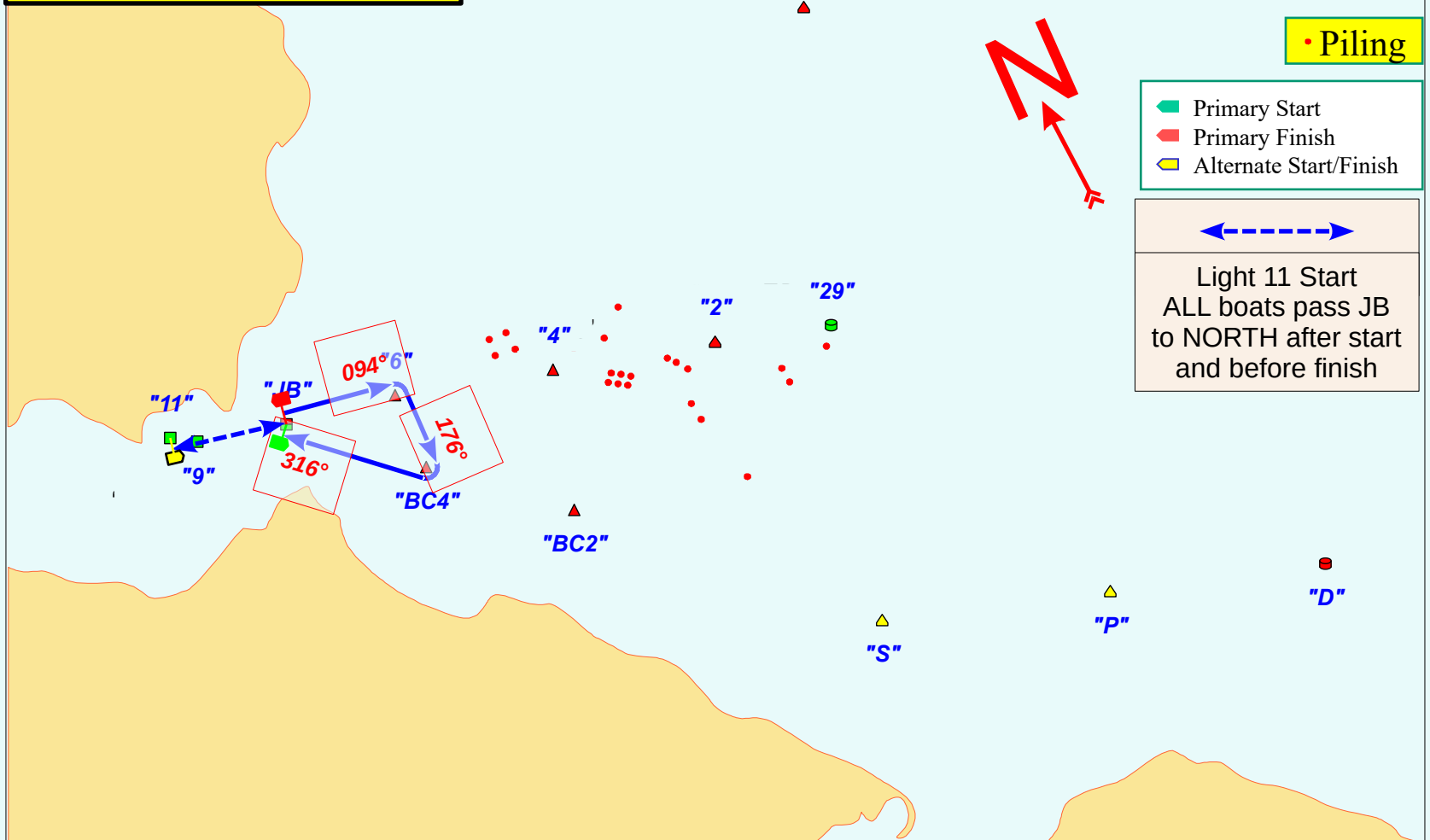
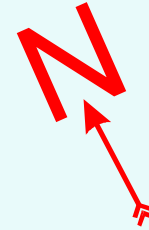
This chart is not to be used
for navigation purposes. It
is for illustration only

• Piling

- Primary Start
- Primary Finish
- Alternate Start/Finish



Light 11 Start
ALL boats pass JB
to NORTH after start
and before finish



Course 'F'

Dist = 1.93 NM

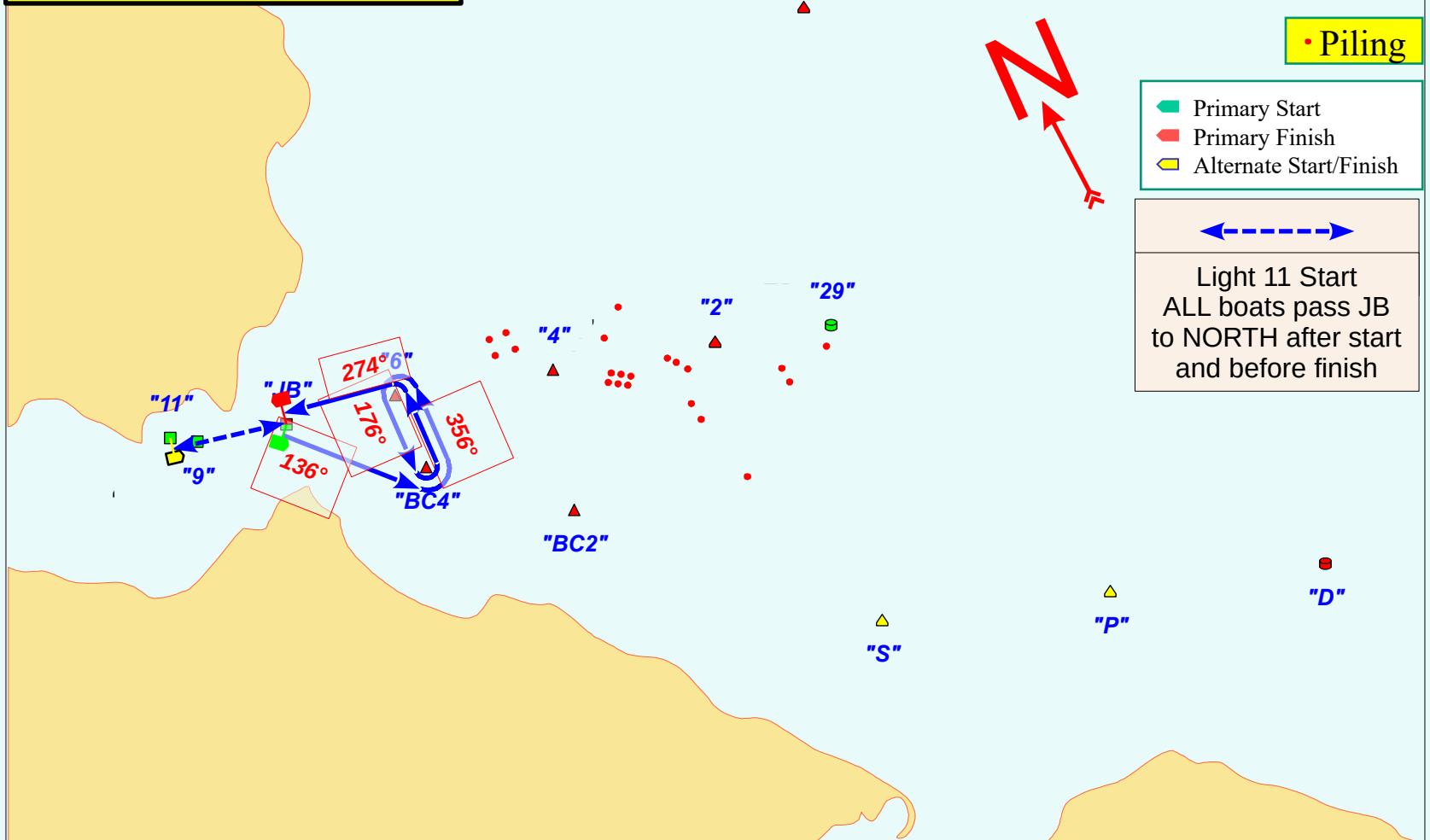
This chart is not to be used
for navigation purposes. It
is for illustration only

• Piling

- Primary Start
- Primary Finish
- Alternate Start/Finish



Light 11 Start
ALL boats pass JB
to NORTH after start
and before finish



Course 'FR'
Dist = 1.93 NM

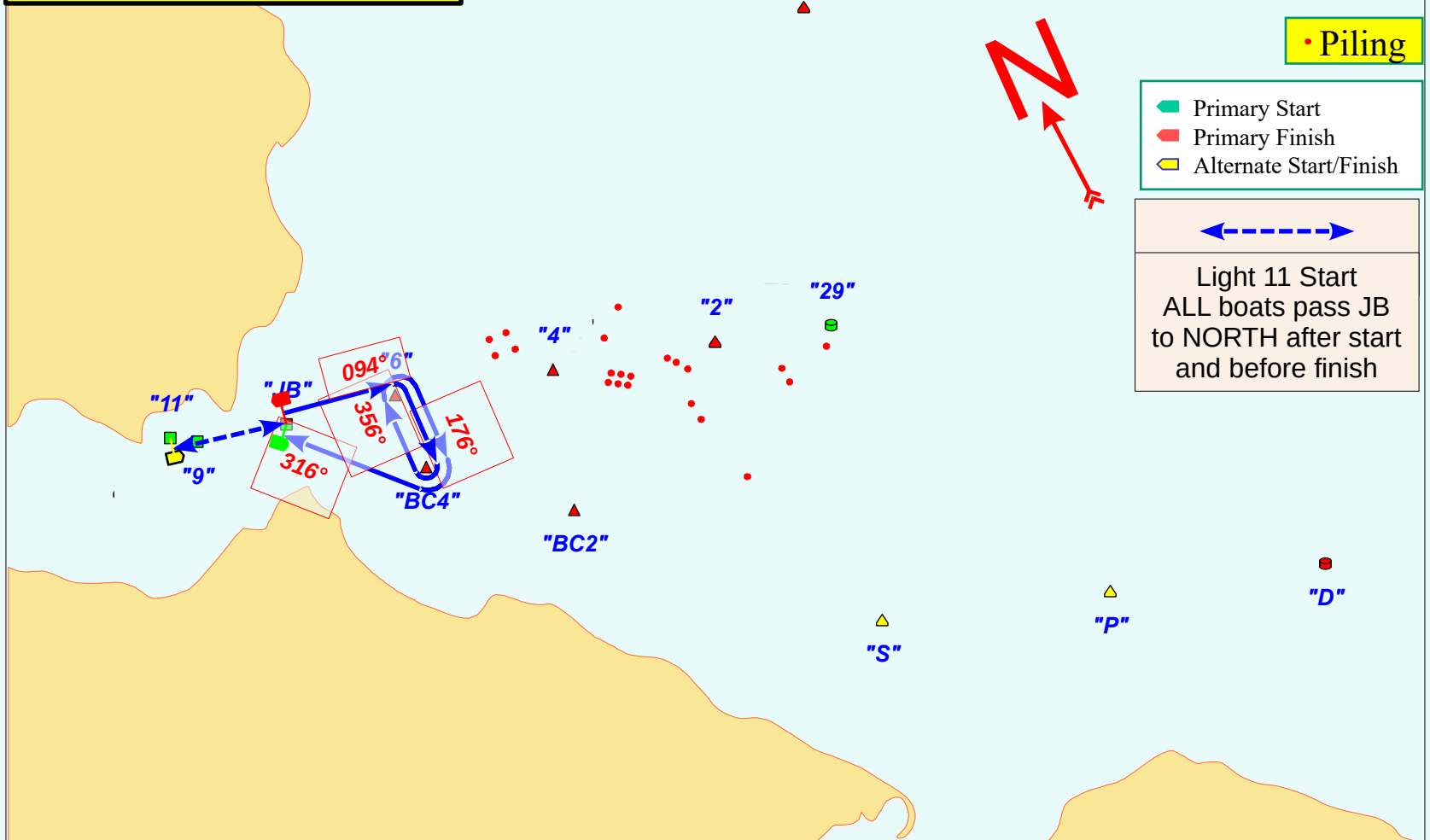
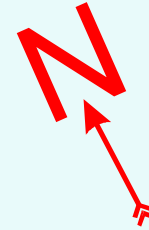
This chart is not to be used
for navigation purposes. It
is for illustration only

• Piling

- Primary Start
- Primary Finish
- Alternate Start/Finish



Light 11 Start
ALL boats pass JB
to NORTH after start
and before finish



Course 'G'
Dist = 3.81 NM

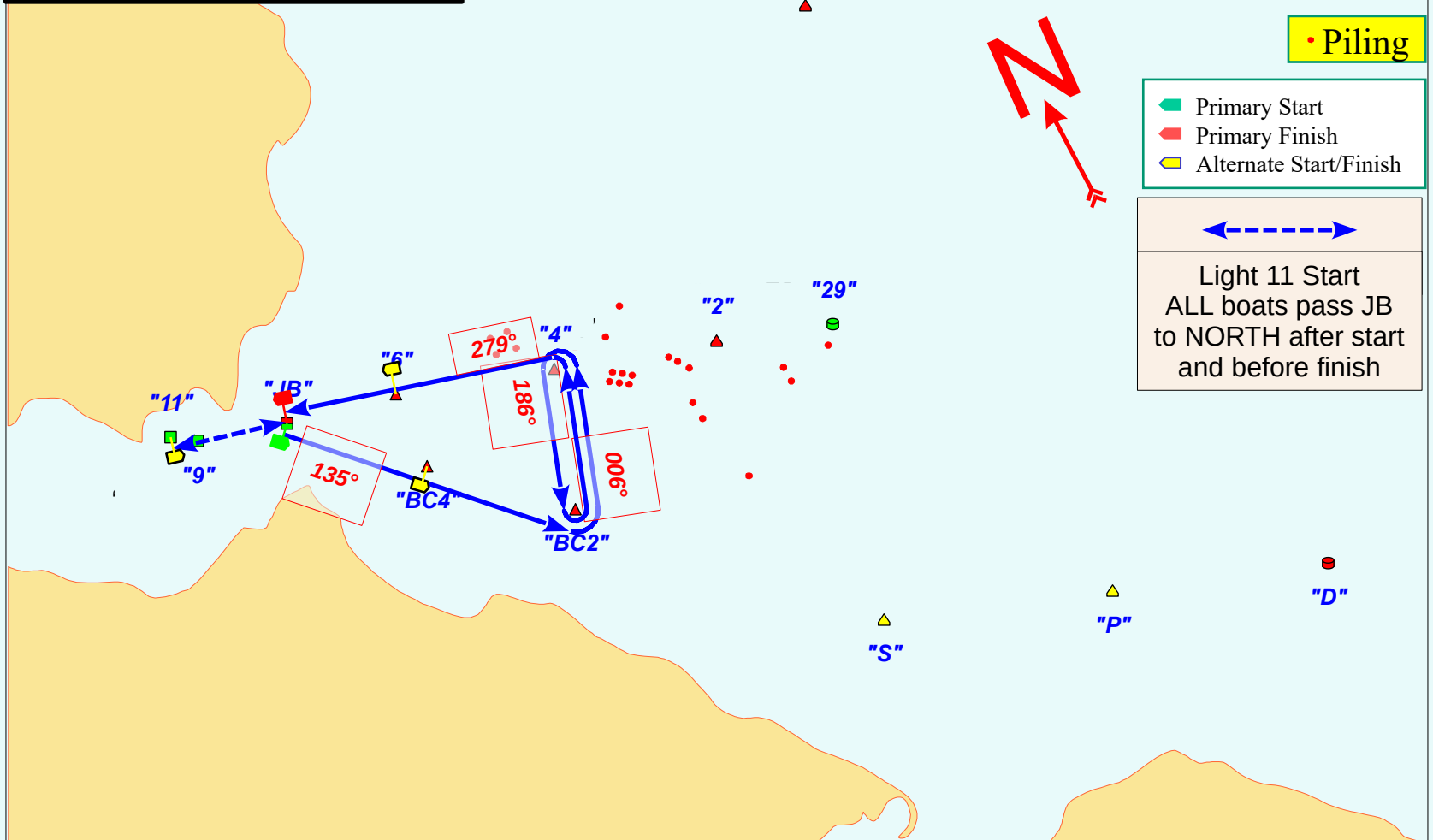
This chart is not to be used
for navigation purposes. It
is for illustration only

• Piling

- Primary Start
- Primary Finish
- Alternate Start/Finish



Light 11 Start
ALL boats pass JB
to NORTH after start
and before finish



Course 'GR'
Dist = 3.81 NM

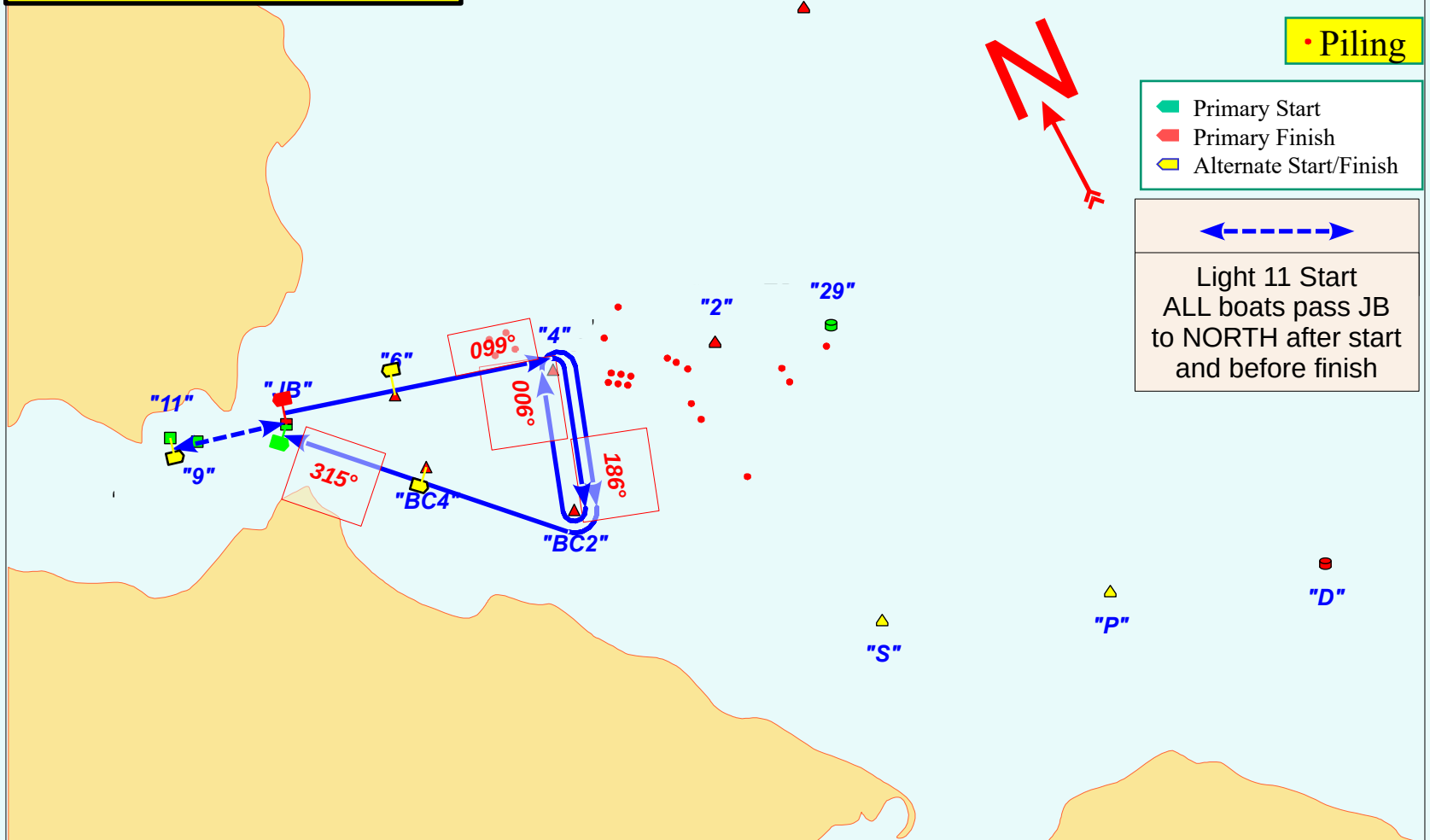
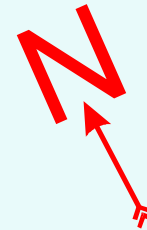
This chart is not to be used
for navigation purposes. It
is for illustration only

• Piling

- Primary Start
- Primary Finish
- Alternate Start/Finish



Light 11 Start
ALL boats pass JB
to NORTH after start
and before finish



Course 'WA'
Dist = 1.06 NM

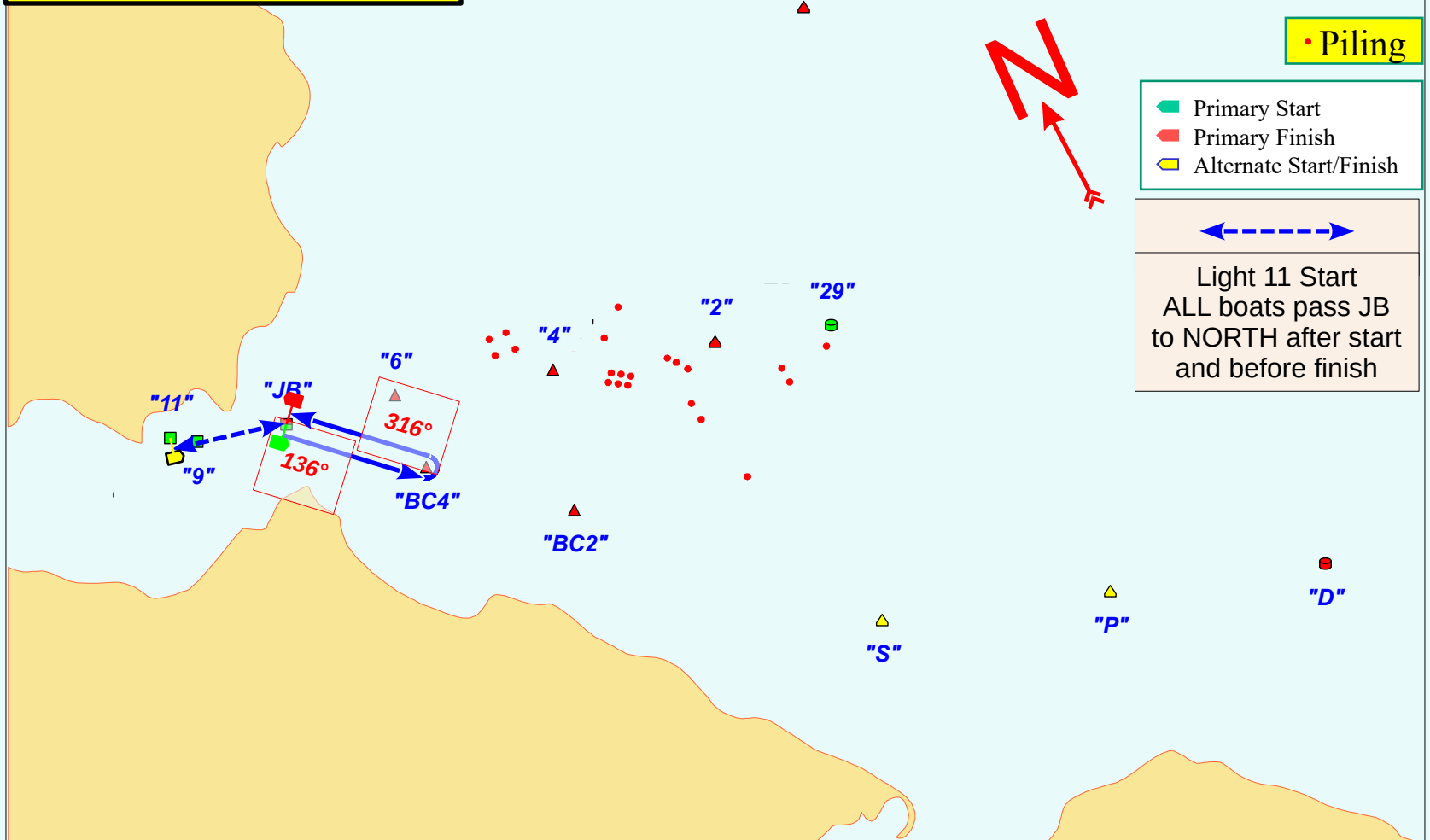
This chart is not to be used
for navigation purposes. It
is for illustration only

• Piling

- Primary Start
- Primary Finish
- Alternate Start/Finish



Light 11 Start
ALL boats pass JB
to NORTH after start
and before finish



Course 'WB'
Dist = 2.16 NM

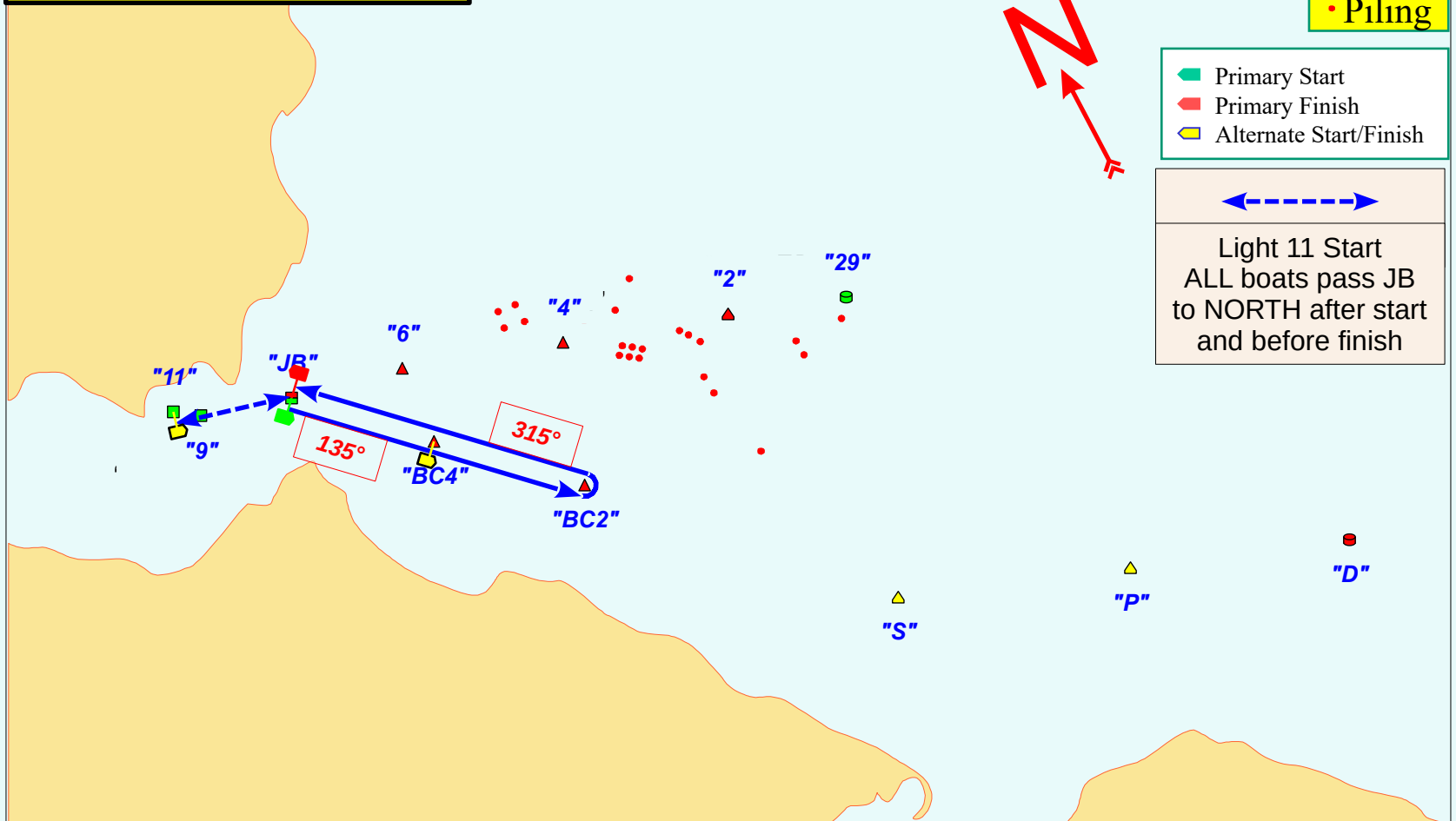
This chart is not to be used
for navigation purposes. It
is for illustration only

• Piling

- Primary Start
- Primary Finish
- Alternate Start/Finish



Light 11 Start
ALL boats pass JB
to NORTH after start
and before finish

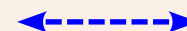


Course 'WC'
Dist = 4.56 NM

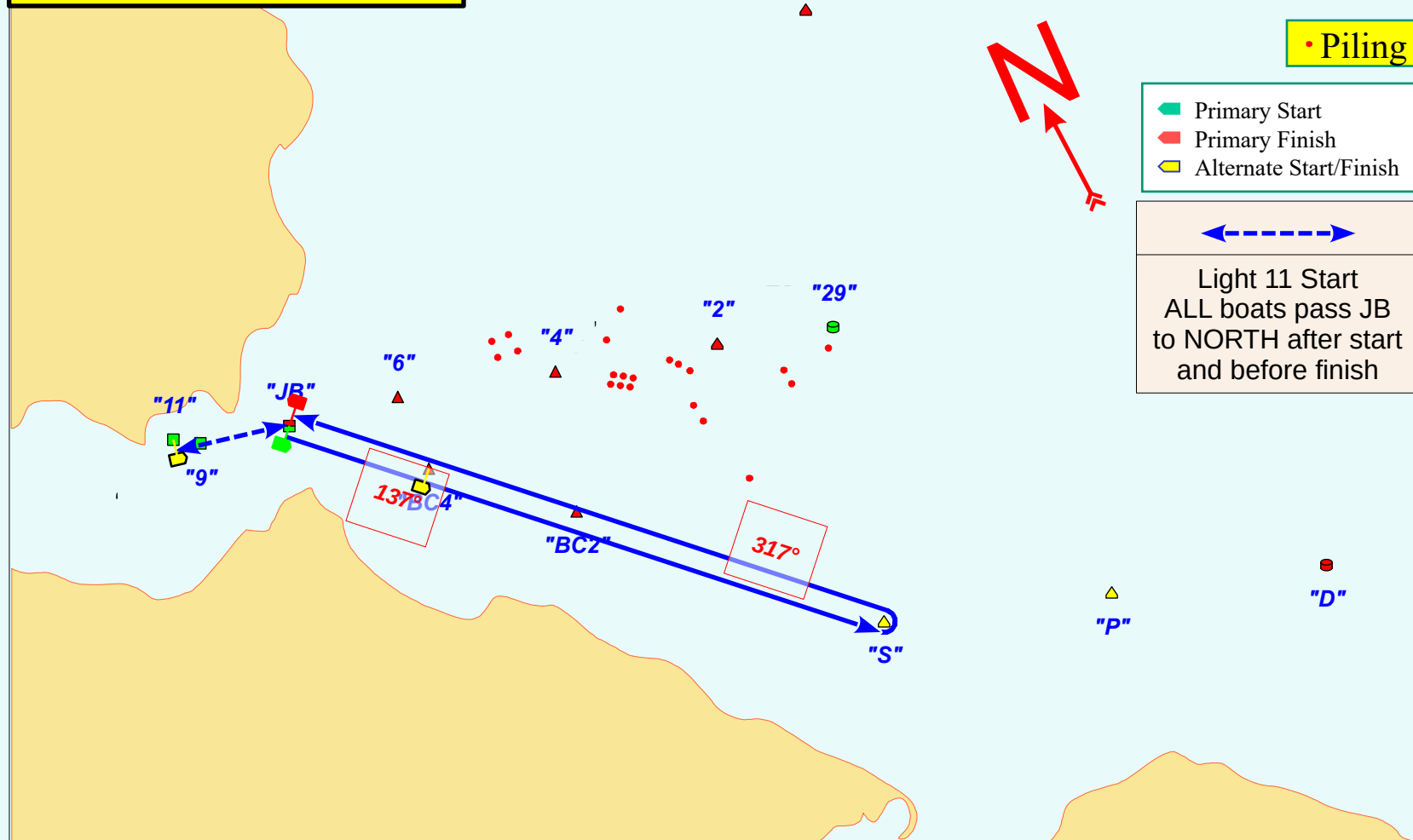
This chart is not to be used
for navigation purposes. It
is for illustration only

• Piling

- Primary Start
- Primary Finish
- Alternate Start/Finish



Light 11 Start
ALL boats pass JB
to NORTH after start
and before finish



Course 'WD'
Dist = 1.68 NM

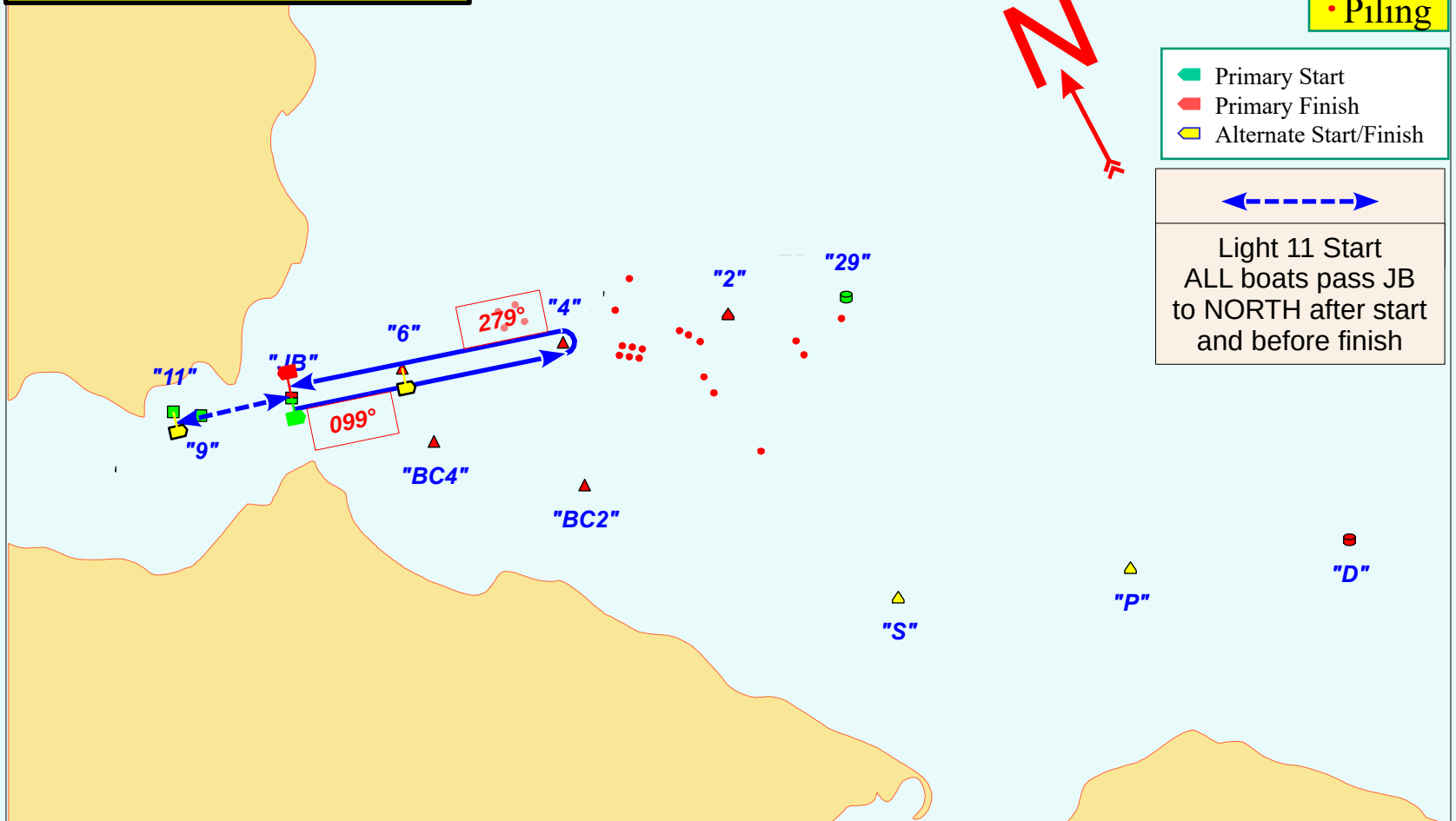
This chart is not to be used
for navigation purposes. It
is for illustration only

• Piling

- Primary Start
- Primary Finish
- Alternate Start/Finish



Light 11 Start
ALL boats pass JB
to NORTH after start
and before finish



Course 'WE'
Dist = 3.44 NM

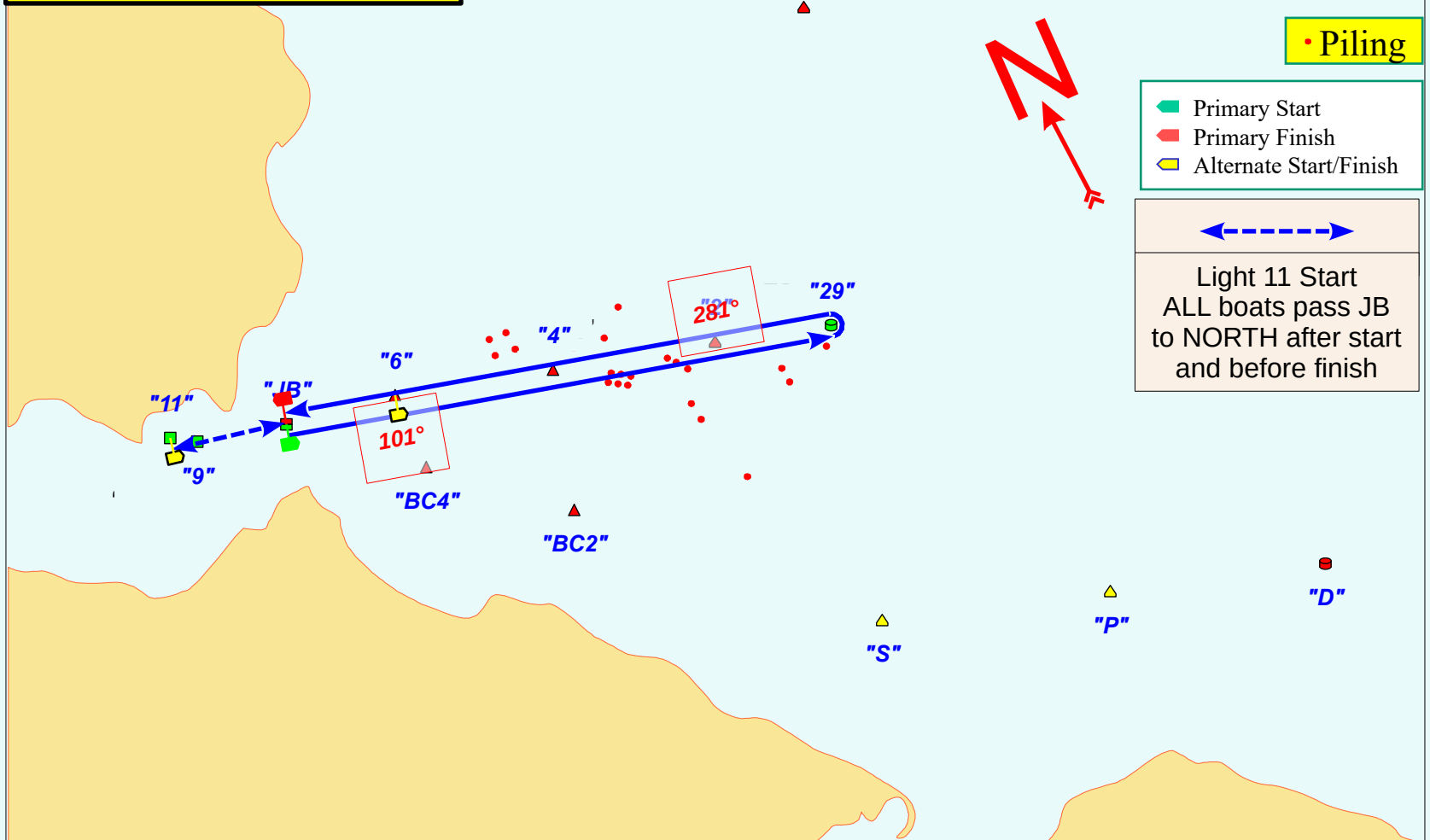
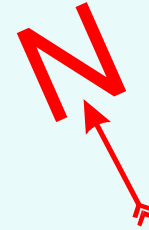
This chart is not to be used
for navigation purposes. It
is for illustration only

• Piling

- Primary Start
- Primary Finish
- Alternate Start/Finish



Light 11 Start
ALL boats pass JB
to NORTH after start
and before finish



Course 'WF'
Dist = 4.38 NM

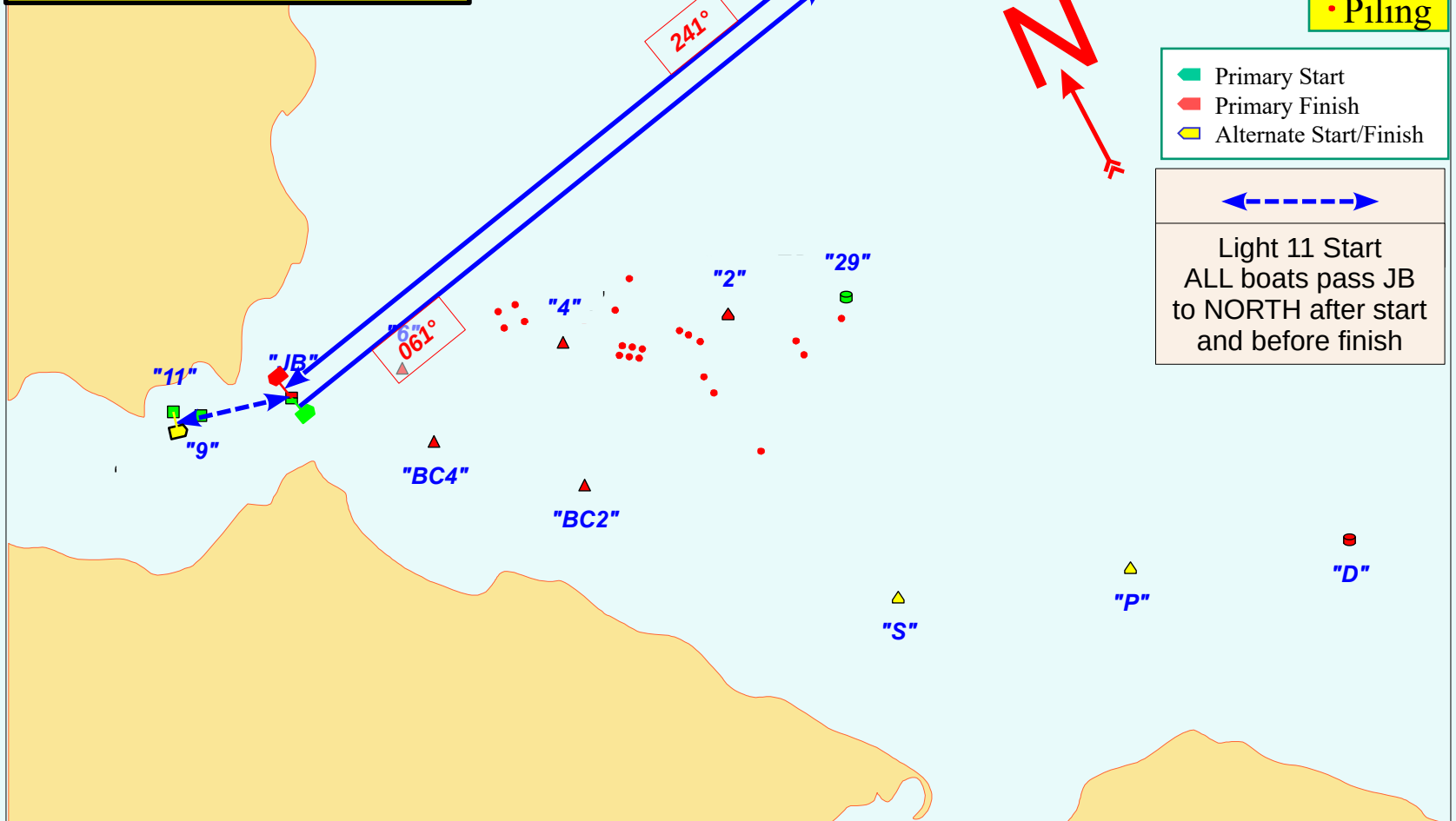
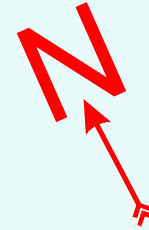
This chart is not to be used
for navigation purposes. It
is for illustration only

• Piling

- Primary Start
- Primary Finish
- Alternate Start/Finish



Light 11 Start
ALL boats pass JB
to NORTH after start
and before finish



Course 'WG'
Dist = 5.84 NM

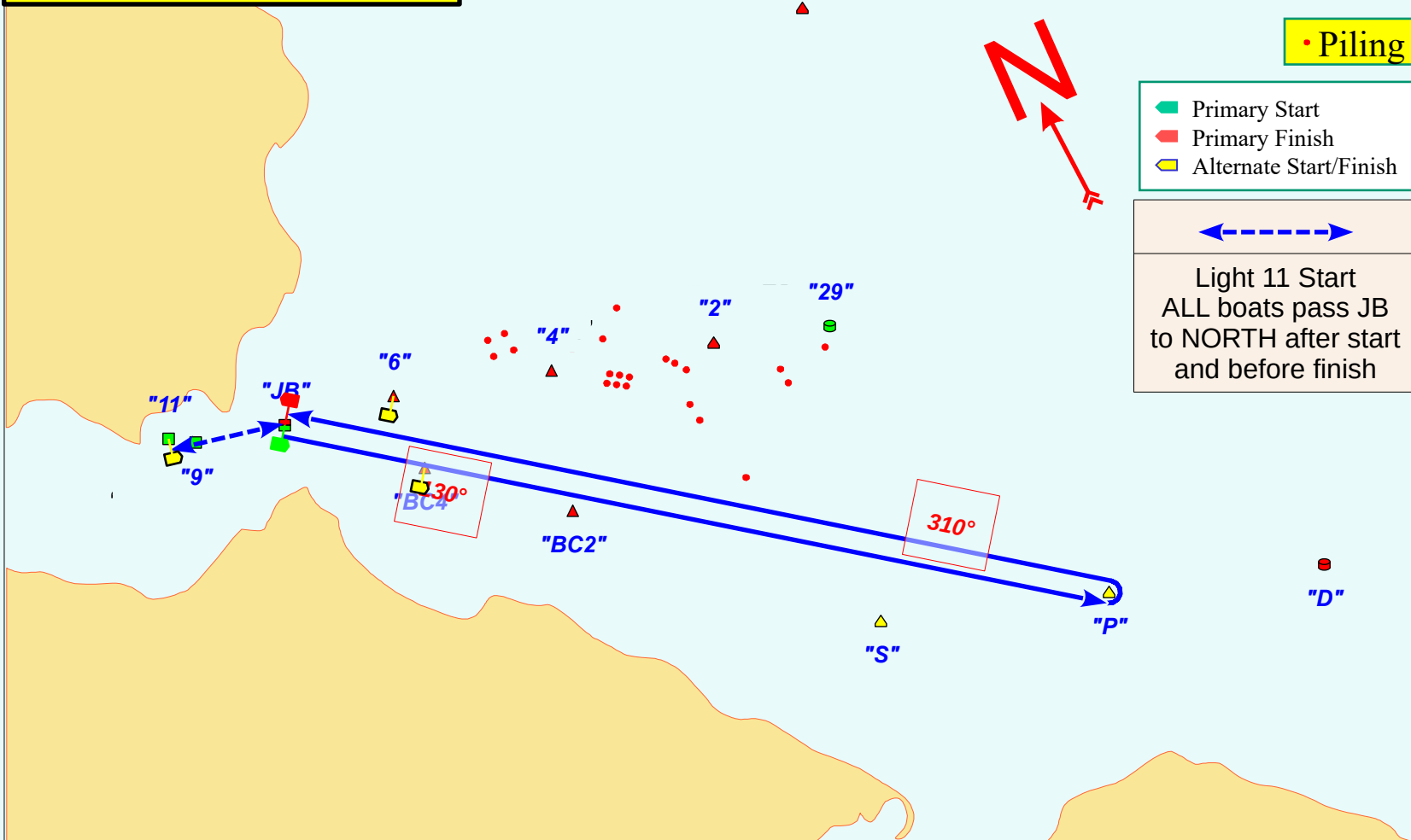
This chart is not to be used
for navigation purposes. It
is for illustration only

• Piling

- Primary Start
- Primary Finish
- Alternate Start/Finish



Light 11 Start
ALL boats pass JB
to NORTH after start
and before finish



Course 'WH'
Dist = 7.1 NM

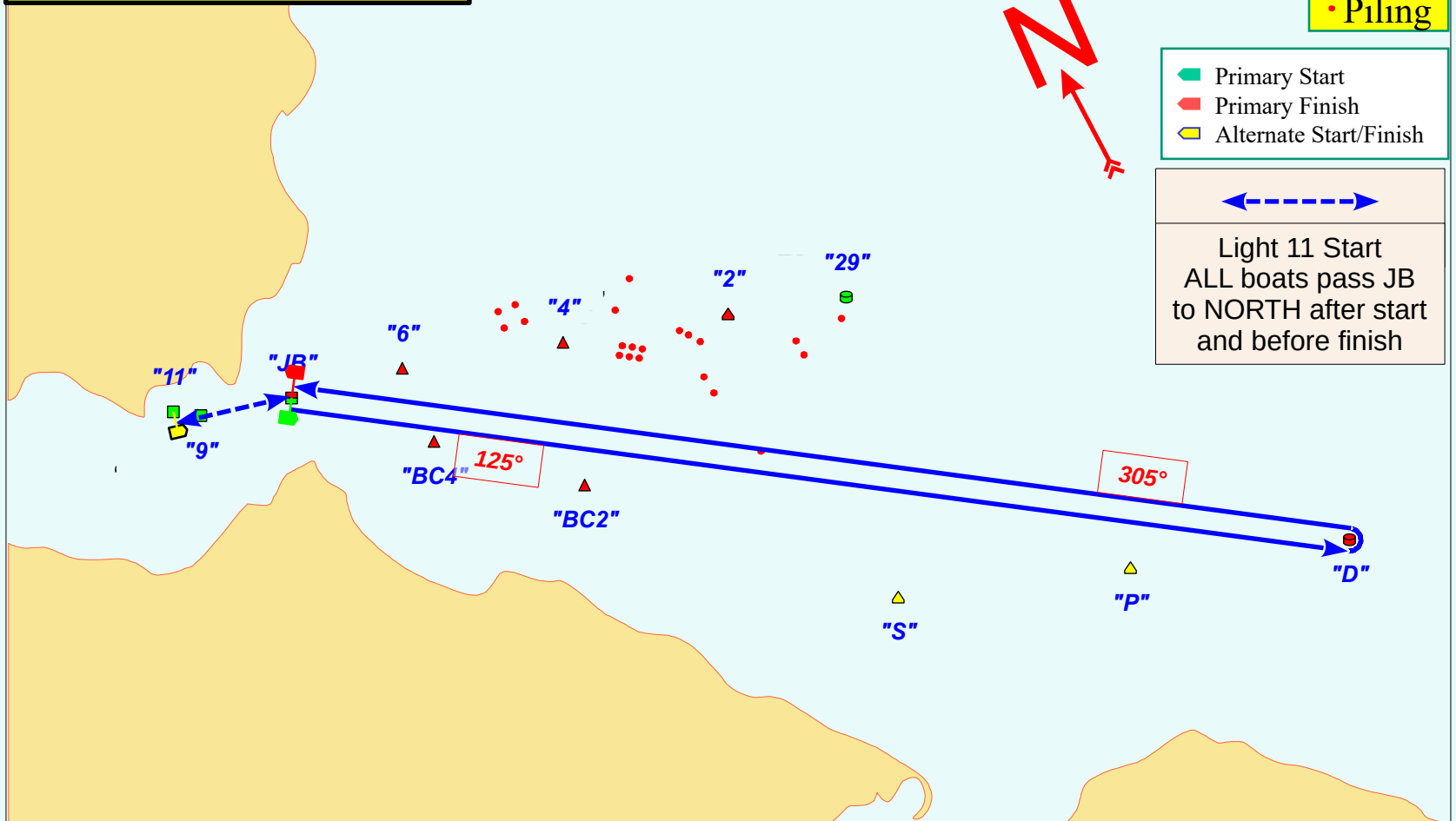
This chart is not to be used
for navigation purposes. It
is for illustration only

• Piling

- Primary Start
- Primary Finish
- Alternate Start/Finish



Light 11 Start
ALL boats pass JB
to NORTH after start
and before finish



Course 'Dahlgren Cup' Dist = 9.39 NM

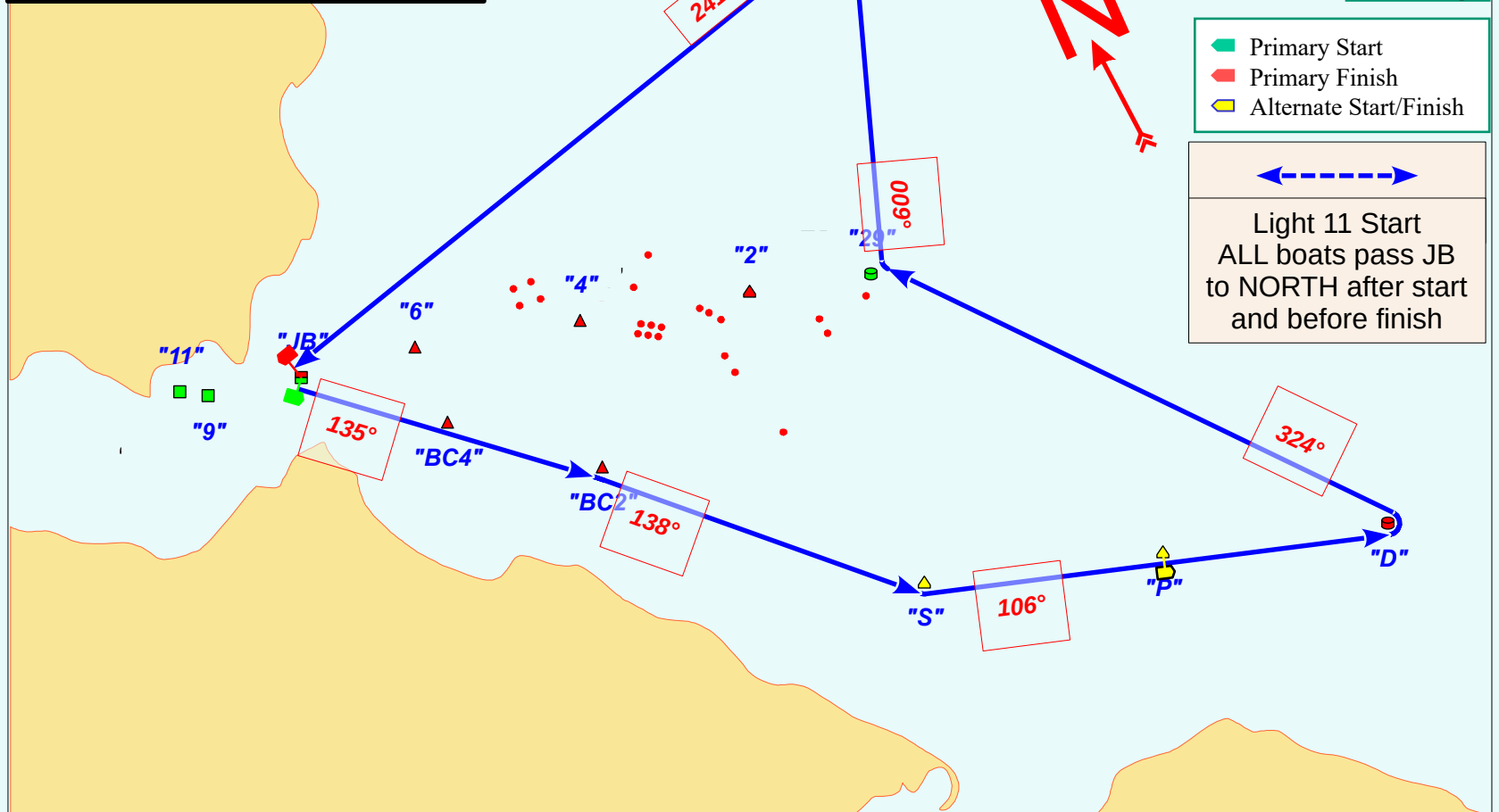
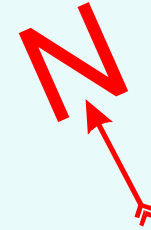
This chart is not to be used
for navigation purposes. It
is for illustration only

• Piling

- Primary Start
- Primary Finish
- Alternate Start/Finish



Light 11 Start
ALL boats pass JB
to NORTH after start
and before finish



**Course
'Dahlgren
CupR'
Dist = 9.39 NM**

This chart is not to be used
for navigation purposes. It
is for illustration only

• Piling

Primary Start
Primary Finish
Alternate Start/Finish



Light 11 Start
ALL boats pass JB
to NORTH after start
and before finish

